



WATCHMAN™ LEFT ATRIAL
APPENDAGE CLOSURE DEVICE

ATRIAL FIBRILLATION & WATCHMAN IMPLANT

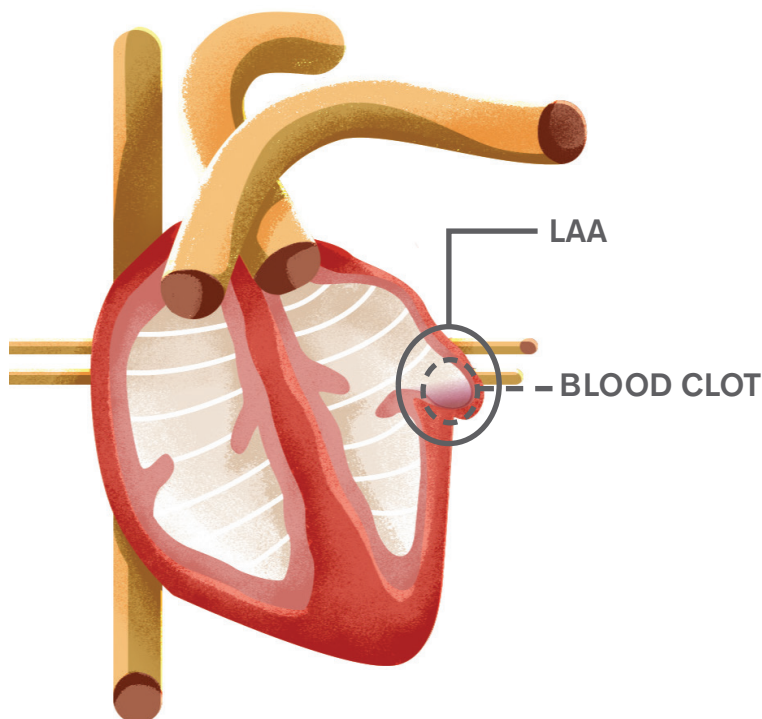
On average, a person with AFIB is five times more likely to suffer a stroke than someone with a regular heartbeat.¹

WHAT IS AFIB?

Atrial Fibrillation (AFib) is a heart condition in which the upper chambers, atria, of your heart beat irregularly. AFib can affect the ability of the heart to pump blood normally, and can lead to the formation of a clot. If a blood clot forms, it can travel out of the heart to the brain and cause a stroke.

The most common treatment to reduce stroke risk in patients with AFib is blood-thinning medication. While very effective at reducing the risk of stroke, blood thinners increase the risk of serious bleeding over time and come with certain requirements and restrictions.

Some people may need an alternative to blood thinners, due to increased risk for bleeding or difficulty taking blood thinners.



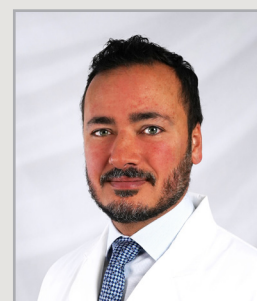
Over 90% of strokes related to AFIB are a result of clots forming in the left atrial appendage (LAA).²

MEET YOUR WATCHMAN™ TEAM

The WATCHMAN™ team, under the direction of **Yousef Bader, MD, Interventional and Structural Cardiologist and Cardiac Electrophysiology Specialist**, is proud to offer the WATCHMAN™ procedure at McLaren Bay Region.

For patients with non-valvular atrial fibrillation (AF), WATCHMAN™ is a non-drug alternative to long-term blood thinners to reduce the risk of AF-related stroke.

To learn more about WATCHMAN™ or to make a referral, contact McLaren Bay Heart & Vascular at (989) 894-3278.



**Yousef
Bader, MD**

*Interventional and
Structural Cardiologist*

WATCHMAN™: A LIFE-CHANGING ALTERNATIVE

The **WATCHMAN™** implant is a safe, minimally-invasive, one-time implant that permanently reduces your risk for stroke without the need for lifelong blood-thinning medications. The implant is a small, flexible device about the size of a quarter, implanted into the heart via a catheter-based approach that does not involve open-heart surgery.

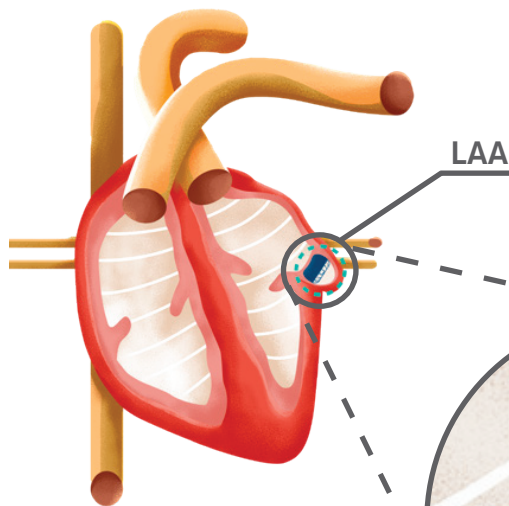


About the size of a quarter.

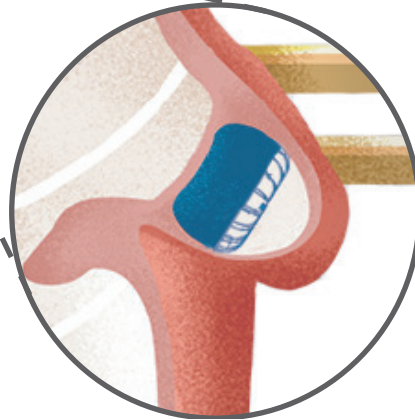


*The **WATCHMAN™** technology has been implanted in more than 600,000 patients worldwide.³*

HOW WATCHMAN™ WORKS



WATCHMAN™ fits into the high-risk left atrial appendage (LAA).



WATCHMAN™ permanently closes off this part of your heart to keep those blood clots from escaping.

WATCHMAN FLX™ is a trademark of Boston Scientific. Boston Scientific is a worldwide developer, manufacturer and marketer of medical devices that are used in a broad range of interventional medical specialties. Illustrations and images of the WATCHMAN FLX™ implant used courtesy of Boston Scientific.

1. American Heart Association (2024). *Living with Atrial Fibrillation Guide*, page 8. Accessed 12/19/2025 at www.stroke.org/en/-/media/Files/Health-Topics/Atrial-Fibrillation/Living-With-AFib-Guide.pdf

2. Boston Scientific. *Reduce AFib-related Stroke Risk*. Accessed January, 2026 at www.watchman.com.

3. Boston Scientific. *The Watchman™ Implant*. Accessed January, 2026 at www.watchman.com.

Additional source materials:

- Hart RG, Halperin JL. *Ann Intern Med*. 1999; 131:688–695.
- McGrath ER. *Neurology* 2013; 81:825–832.
- Benjamin EJ, Muntner P, Alonso A, et al. Heart disease and stroke statistics—2019 update: a report from the American Heart Association. *Circulation*. 2019;137:e1–e473.
- “Atrial Fibrillation Fact Sheet.” Centers for Disease Control and Prevention. https://www.cdc.gov/heartdisease/atrial_fibrillation.htm.
- Price MJ, Reddy VY, Valderrábano M, et al. Bleeding outcomes after left atrial appendage closure compared with long-term warfarin. *JACC Cardiovasc Interv*. 2015 Dec 28;8(15):1925–1932.



BAY REGION

**McLaren Bay Heart & Vascular
1900 Columbus Avenue
South Tower, 4th Floor
Bay City, MI 48708**

**Phone: (989) 894-3278
Fax: (989) 891-0908**

mclaren.org